

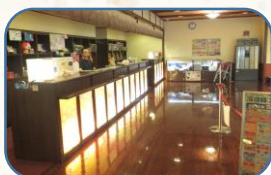
CHECK-IN PROCEDURE



Place your shoes in the locker at the entrance
(¥100 coin will be returned when you open the door)



Buy ticket(s) at the machine located on the right-hand side



Please hand your ticket(s) to the staff at the front desk



Bedrock bath guests: shoe locker key will be exchanged to a wristband when you receive your clothes



The area on the left-hand side is exclusively for bedrock bath guests (special clothes provided by us)



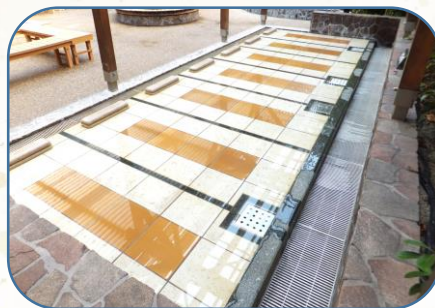
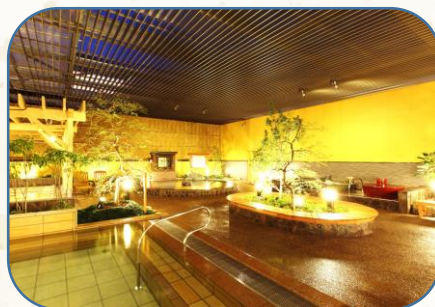
Entrance to changing room & hot spring:
Men: left curtain
Women: right curtain



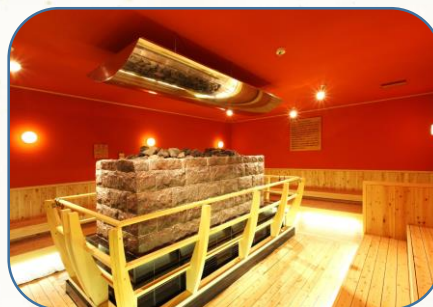
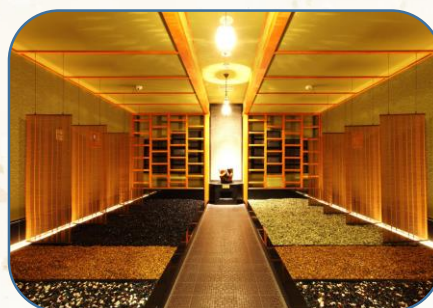
Place your clothes in the locker
(¥100 coin will be returned when you open the door)



Large public bath (gender separated)



BEDROCKBATH (GANBANYOKU) (mixed - special clothes provided)



Large public bath BASICS

1. Make sure you have a towel to wash your body with you (towels available at front desk: rental towel set ¥150)
2. Take off all clothes
3. Wash your body in the designated area while seated
4. Enter the bath – but please do not soak your towel in the bathtub
5. Ladies with long hair: kindly put them up as a courtesy
6. After the bath please take a rest before you enter again
7. You might consider to rinse your head with cold water to avoid possible head ache
8. Please dry off before you return to the changing area !

BEDROCK BATH BASICS

1. Change to the clothes provided at entry
2. Lay face down for approx. 5 min.
3. Turn around and lay on the back as long as you feel comfortable

HOW TO BUY TICKETS

Rental towel set	Public Bath	Bedrock bath
会員 入浴券 大人 800円	入浴券 大人 850円	入浴券 大人 400円
会員 岩盤浴券 大人 700円	岩盤浴券 大人 750円	岩盤浴券 大人 400円
貸タオルセット バスタオル+カミソ 150円	タオル <販売> 100円	バスタオル <販売> 400円
		カミソ 男性用 120円

Ticket machine